

Bedrock provides stable bed and banks, high quality mixed aged native vegetation, woody weeds scarce.



Valley margin widens, urban development adjacent to creek, discontinuous native vegetation.



Native vegetation threatened by seeding exotic trees and suppressing ground layer



Woody and herbaceous weeds abundant, change in bed gradient stabilised by willow roots.



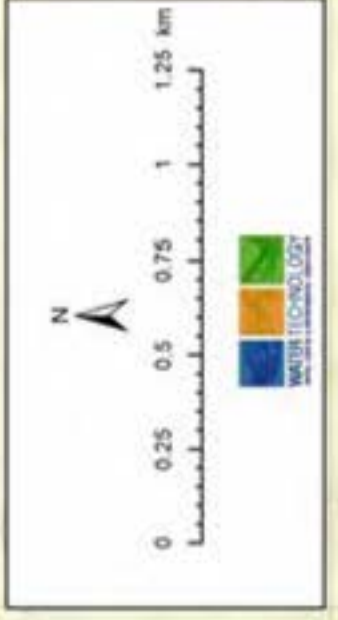
Creek incised, native vegetation present with mixed age and structure, woody weeds abundant particularly blackberry and willow.



Willow and blackberry abundant adjacent to golf course, occasional exotic plantings.



Good quality native vegetation downstream of Morefield Park Drive.



Wodonga Urban Landcare Network
Wodonga Regional Waterway Action Plan
 Felltimber Creek Condition Summary

4860000 6002000 0001000 4860000 4840000 6002000 0001000 4820000 6002000 0001000 4800000 6002000 0001000

WODONGA REGIONAL WATERWAY ACTION PLAN

Felltimber Creek:

Values:

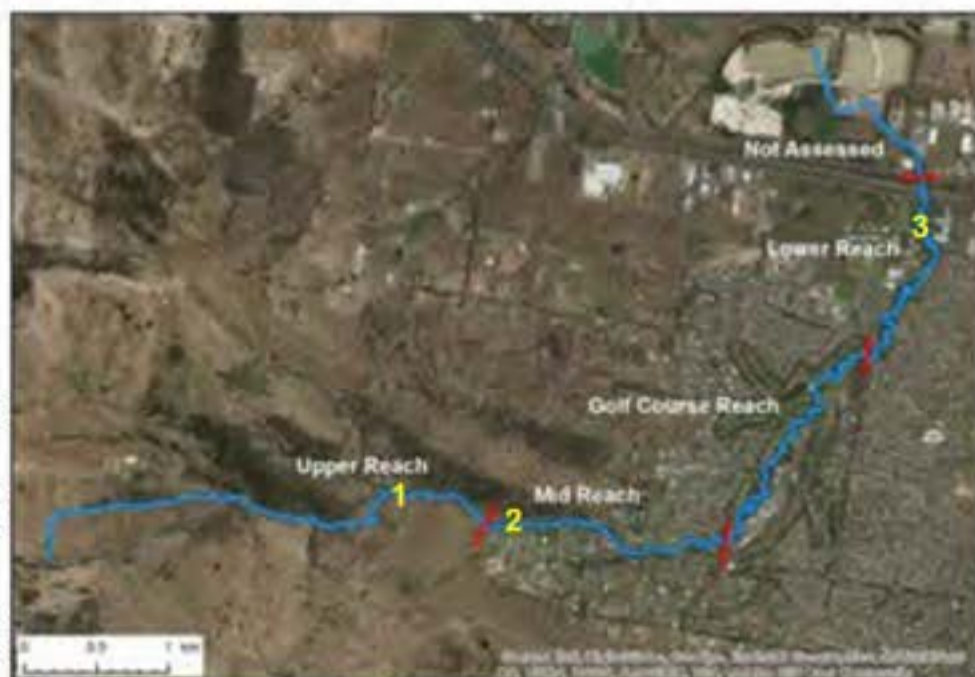
- **Native Vegetation** – Conservation reserves and large old trees.
- **Aesthetics** – Parklands and reserves along Felltimber Creek.
- **Recreational Activities** – Bike riding, walking and playing golf.

Threats:

- **Stock Access** – confined to the Upper Reach, is damaging the integrity of the banks and contributing to local erosion.
- **Increased Bed and Bank Erosion** – associated with landuse (e.g. cleared and urban catchment) and stock access and a lack of riparian vegetation in the Upper Reach.
- **Exotic Flora** – is outcompeting existing native vegetation, preventing natural recruitment, invading the channel and altering the natural stream and riparian ecology.
- **Loss of Large Woody Habitat** – leads to channel and riparian habitat loss, reduction in stream roughness and bed diversity.
- **Land Tenure Limiting Access** - Felltimber Creek runs through private land (farms), the Wodonga Country Club and Wodonga TAFE making access and management of the creek difficult.

Priority Management Actions:

- **Stock Access Management and Revegetation** - Manage stock access to Felltimber Creek to enhance the condition of vegetation, improve the condition of banks, reduce physical pugging and sedimentation, and to improve water quality. Install offstream watering points where stock will lose access to water after fencing.
- **Maintain Good Vegetation** – protect the good vegetation including the conservation reserves and large old trees from the threat of weeds.
- **Bed Instability and Bank Erosion Management** – Undertake a stability analysis of the Felltimber Creek to determine the extent of active deepening. This may lead to the design and construction of rock chutes to manage the deepening. Review the erosion below the McGaffins Road culvert apron to determine if additional rock or redesign is required to ensure ongoing stability.
- **Exotic Flora Management** – Undertake exotic flora management activities with the aim to eradicate seeding woody weeds. Implement a recurrent work program to monitor and control regrowth of woody weeds within Felltimber Creek. Target other highly invasive weed species including blackberry. Priority areas: 1) Lower Reach, 2) Golf Course Reach, 3) Mid Reach.
- **Revegetation Following Weed Management** – Undertake revegetation along Felltimber Creek to improve bank stability and the habitat and aesthetic value following the removal of weeds. Revegetate around creek within the Hunchback Mountain Bike Park.
- **Stakeholder Engagement** – Engage key stakeholders including Wodonga Country Club, Wodonga TAFE and local community. Discuss land management practices/improvement opportunities with relevant manager/authority including rubbish dumping, weed control methods, garden escapes and avoiding planting invasive garden specimens close to the waterway.



Value	Upper Reach	Mid Reach	Golf Course Reach	Lower Reach
Native Vegetation	✓	✓	✓	✓
Aesthetics		✓	✓	✓
Recreational Activities		✓	✓	✓

Threat	Upper Reach	Mid Reach	Golf Course Reach	Lower Reach
Stock Access	✓			
Increased Bed Instability & Bank Erosion	✓	✓	✓	✓
Exotic Flora	✓	✓	✓	✓
Urban Development		✓		
Degraded Riparian Vegetation	✓	✓	✓	✓
Loss of Large Woody Habitat	✓	✓	✓	✓
Limited Access	✓		✓	✓

Action	Upper Reach	Mid Reach	Golf Course Reach	Lower Reach
Stock Access Management and Revegetation	✓			
Maintain & Protect Good Quality Vegetation	✓	✓	✓	✓
Bed and Bank Erosion Management		✓	✓	✓
Exotic Flora Management	✓	✓	✓	✓
Revegetation Following Weed Management	✓	✓	✓	✓
Urban Development Planning		✓		✓
Stakeholder Engagement	✓	✓	✓	✓

