

Phill Locke Adams Park, heavily infested with tree, shrub and ground weeds.



Scattered large woody weeds and established native trees.



Weed infested channel and hillslope adjacent to abattoir.



Willow roots stabilising a change in bed gradient.



Les Stone Park, upstream of Lawrence Road, weed control, large tree protection and revegetation, Parrots Feather present.



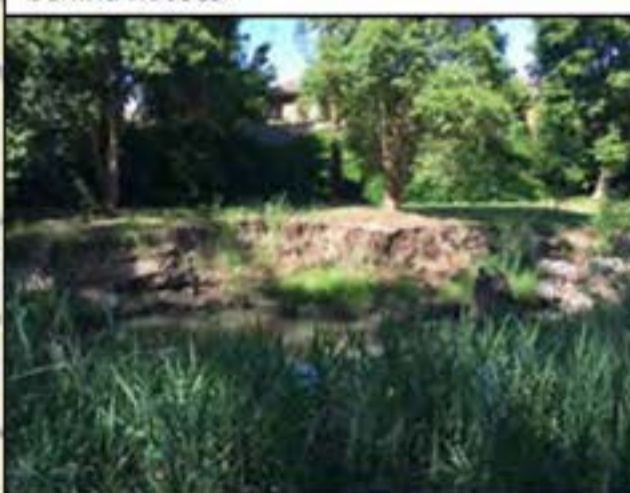
Upstream from walk bridge, abundant weeds and sediment deposition evident.



Bank Slumping and lack of stabilising bank vegetation.



Bank erosion on western bank, access difficult behind houses.



0 0.25 0.5 0.75 km

WATER TECHNOLOGY

Wodonga Urban Landcare Network

Landcare

Wodonga Regional Waterway Action Plan

House Creek Condition Summary

Sources: Esri, HE (Hong Kong), Esri User Community

WODONGA REGIONAL WATERWAY ACTION PLAN



House Creek:

Values:

- *Aesthetics* – Parklands
- *Recreational Activities* – Bike riding and walking
- *Native Vegetation* – There is native remnant and revegetation along House Creek
- *Community Involvement* – The community is actively involved with the management of House Creek

Value	Upper Reach	Mid Reach	Lower Reach
Aesthetics	✓	✓	✓
Recreational Activities	✓	✓	✓
Native Vegetation	✓	✓	
Community Involvement	✓	✓	

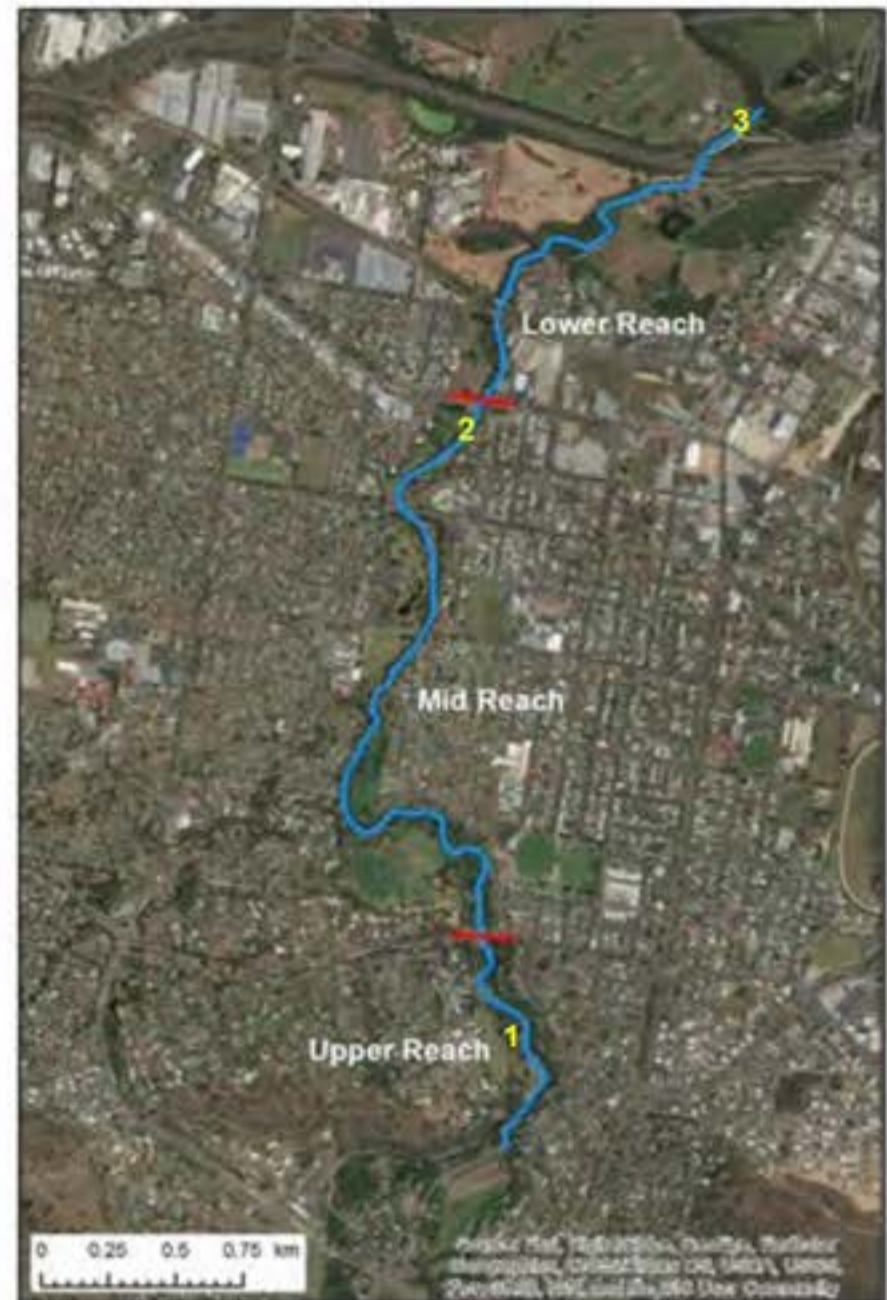
Threats:

- *Increased Bed Instability and Bank Erosion* – associated with landuse (e.g. cleared and urbanised catchment), and a lack of riparian vegetation.
- *Sedimentation* – infilling of the channel, loss of channel capacity and loss of bed diversity.
- *Exotic Flora* – is outcompeting existing native vegetation, preventing natural recruitment, invading the channel and altering the natural stream and riparian ecology.
- *Loss of Large Woody Habitat* – leads to channel and riparian habitat loss, reduction in stream roughness and bed diversity.
- *Land Tenure* – Freehold land abuts the House Creek channel in some locations making access and management of the waterway more difficult.

Threat	Upper Reach	Mid Reach	Lower Reach
Increased Bed Instability & Bank Erosion	✓	✓	✓
Sedimentation	✓	✓	✓
Exotic Flora	✓	✓	✓
Loss of Large Woody Habitat	✓	✓	✓
Land Tenure	✓		✓

Priority Management Actions:

- *Increased Bed Instability & Bank Erosion Management* – Undertake a stability analysis of the House Creek to determine the extent of potential deepening and bank erosion. This may lead to the design and construction of rock chutes to manage the deepening or rock beaching and/or revegetation to manage bank erosion. Review the bank erosion identified in this creekline, particularly along the right bank adjacent to freehold land in the Upper Reach. Also review the impacts of sedimentation and support efforts to reduce sediment generation in the upstream catchments of the Huon and Castle Creeks.
- *Maintain Revegetation* – Protect the revegetation from the threat of weeds to ensure the survival and realisation of community and Council investment.
- *Exotic Flora Management* – Engage key stakeholders, including the community and abattoir, to ensure cooperation in the development of a detailed and coordinated weed management plan for the entire House Creek riparian corridor. A coordinated approach is required as there are seeding tree weeds throughout. Undertake exotic flora management activities with the aim to eradicate highly invasive weeds. Implement a recurrent work program to monitor and control regrowth of weeds along House Creek. Priority Actions: 1) Survey House Creek for populations of Parrots Feather and eradicate, 2) control weeds within the Upper and Mid Reaches, 3) Control weeds within the Lower Reach in Phil Adams Park and Belvoir Park to Wodonga Creek, 4) Control weeds within the Lower Reach in Felix Grundy Park and the left bank adjacent to Wodonga Abattoir.
- *Revegetation Following Weed Management* – Undertake revegetation along House Creek to improve bank stability and the habitat and aesthetic values following the removal of weeds.
- *Stakeholder Engagement* – Engage key stakeholders including 'Friends of' groups and local community. Discuss land management practices/improvement opportunities with relevant manager/authority including rubbish dumping, weed control methods, garden escapes and avoiding planting invasive garden specimens close to the waterway.



Action	Upper Reach	Mid Reach	Lower Reach
Bed Instability and Bank Erosion Management	✓	✓	✓
Maintain Revegetation	✓	✓	✓
Exotic Flora Management	✓	✓	✓
Revegetation Following Weed Management	✓	✓	✓
Stakeholder Engagement	✓	✓	✓

